

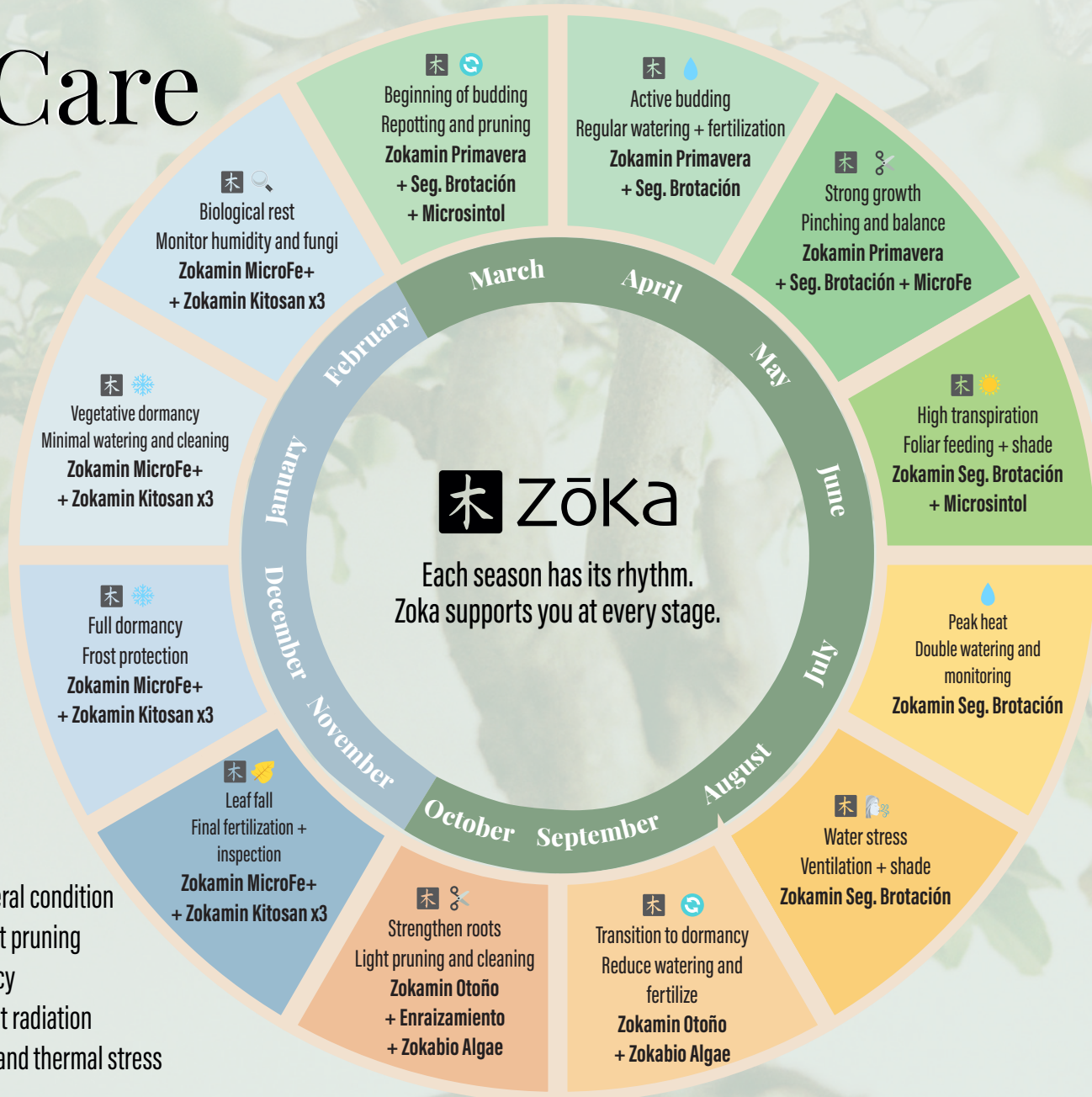
Annual Bonsai Care Cycle

From March to November:

Active growth and maintenance phase

From November to February:

Dormancy and protection phase



LEGEND

- ZOKA fertilizer application
- Pruning or pinching
- Dormancy or cold protection
- Inspection of humidity, fungi or general condition
- Repotting: substrate change and root pruning
- Irrigation: control and water frequency
- Sun control: protection against direct radiation
- Ventilation: airflow to prevent fungi and thermal stress
- Leaf fall: preparation for dormancy

*It is recommended to follow the dosage indicated for each product and alternate between them.

MICROSINTOL

Provides key micronutrients; enhances thickening and lignification.

ZOKAMIN SPRING

Activates budding and growth.

ZOKAMIN SECOND FLUSH

Enhances vigor and promotes the formation of new shoots.

ZOKAMIN ROOTS

Stimulates root development.

ZOKAMIN AUTUMN

Strengthens and prepares the tree for dormancy.

ZOKABIO ALGAE

Anti-stress biostimulant.

ZOKAMIN MICROFE+

Provides complementary micronutrient support.

ZOKAMIN KITOSAN X3

Stimulates and protects.

ZOKA POLICARBOL

Improves substrate quality.

ZOKA TRICOFUNG

Biostimulant that enhances overall plant development.



Zoka MicroSintol

What for?

Facilitates sap circulation through vascular tissues, ensuring a spectacular increase in bonsai vigor.

When?

Early spring and late summer.

How?

Brush application.

Zokamin Roots

What for?

Developed to promote rooting processes in trees, transplants, cuttings, stakes and air-layering.

When?

During spring and summer.

How?

Diluted in water.

Zokamin Spring

What for?

A liquid foliar vigor fertilizer, water-soluble, easily and rapidly assimilated for all species.

When?

Apply at any stage of development.

How?

Foliar spraying or fertigation.

Zokamin Second Flush

What for?

Nitrogen-rich vegetation stimulant. Forces the tree to produce new shoots and increases ramification.

When?

To induce a second flush and at the end of winter dormancy.

How?

Foliar spray application.

Zokamin Autumn

What for?

Formulated fertilizer to promote the accumulation of nutritional reserves before winter and prepare for vigorous spring budding.

When?

From late summer until leaf fall.

How?

Foliar spray or fertigation.



Everything your bonsai needs

Zokabio Algae

What for?

Liquid seaweed-based biostimulant that increases resistance, enhances basal metabolism and stimulates vegetative growth.

When?

From spring to late autumn and whenever vegetative growth stimulation is required.

How?

Abundant foliar spray.

Zokamin Kitosan x3

What for?

Strengthens natural defenses. Improves growth, root development and nutrient absorption. Helps against stress, diseases and general weakness.

When?

All year round, especially during growth, transplants, pruning or stress situations.

How?

Foliar and root application.

Zokamin MicroFe+

What for?

Corrects and prevents micronutrient deficiencies. Promotes balanced growth, smaller greener leaves and enhanced foliage vitality.

When?

At any stage. Ideal during active growth, after pruning or transplanting, or when deficiency symptoms appear.

How?

Root application.

Zoka PoliCarbol

What for?

Improves substrate quality, activates beneficial microbiota and enhances nutrient absorption, creating a healthy and balanced root environment.

When?

From early spring to late autumn, especially in poor substrates or after transplanting.

How?

Applied through irrigation, diluted in water.

Zoka TricoFung

What for?

Biofertilizer that colonizes the rhizosphere with beneficial microorganisms, stimulating root development and naturally limiting soil pathogens.

When?

During the active growing period, preferably in spring and autumn or after transplanting.

How?

Soil application via irrigation, dissolved in water.